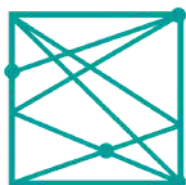


NORTHUMBRIA VIOLENCE REDUCTION UNIT

NORTHUMBRIA SERIOUS VIOLENCE STRATEGY



NORTHUMBRIA
**POLICE & CRIME
COMMISSIONER**

violence
reduction
unit

Improving lives to prevent crime

CONTENTS

03	Foreword Kim McGuinness, Northumbria PCC
04-05	Our Vision
06-07	Our Public Health Approach
08-09	Our Work To Date
10-14	Our Interventions
15-17	Our Current Position
18-20	Our Partnerships
21-23	Our Response
24-27	Our Response Youth Diversion
28-30	Our Response Reduce Offending
31-33	Our Response Working with families
34-37	Our Response Connecting communities
38	Our Measures of Success
39-41	Our Next Steps

FOREWORD

KIM MCGUINNESS

NORTHUMBRIA POLICE & CRIME COMMISSIONER

My Violence Reduction Unit has one core belief; if we improve lives we can prevent crime.

Every act of violence is one too many, and while we will never prevent all violence, I am confident that a relentless focus on turning lives around can make a real difference.



Across our region thousands of us are coming together to address serious violence. We know it takes more than just a police officer to tackle violent crime. It's about families, neighbourhoods, teachers, charities and more working together to improve lives. This document sets out what my Violence Reduction Unit is going to do to support those people and help turn lives around.

No one is born violent, no one is born a criminal, so we need to ask ourselves what happens in the lives of some people that violence should become a routine part of their lives. It's crucial that our approach tackles not only violence but the causes of violence.

Here in Northumbria we're using a public health approach to reducing violence. That means treating violence the same way we would a disease, recognising the symptoms, understanding the causes and then stopping its transmission, helping people to avoid it and giving people the tools they need to tackle it.

The Violence Reduction Unit has only been operational for a short space of time but has already made great inroads in developing this approach. It has done that by recognising all the amazing work that is already ongoing by so many in our region. Our ongoing approach will look at how we add value, share best practice and enhance what is already out there.

We're lucky to live in a relatively safe part of the UK, but we know that violent crime is on the rise, and if we want to keep this region safe, we really need to get behind this approach.

NORTHUMBRIA VRU

OUR VISION

CREATING A CULTURAL CHANGE ACROSS NORTHUMBRIA

Northumbria is a place where individuals, families and communities thrive, making the most of the opportunities to live, learn and work free from the fear of violence.

Our public health approach to tackling serious violence requires commitment from all partners. This is a long term process and in order to change culture we need to:

- Better understand the problem
- Understand the makeup of our communities
- Highlight what works well
- Adapt and develop existing practice to meet the need

There is a strong commitment across Northumbria to tackle the root causes of violent crime. Through the work of the VRU we will establish the following partnership framework to help us deliver our strategy and vision:

STRATEGIC VIOLENCE
REDUCTION BOARD



LOCAL PARTNERSHIPS, PROVIDERS
& COMMUNITY ORGANISATIONS

NORTHUMBRIA VRU

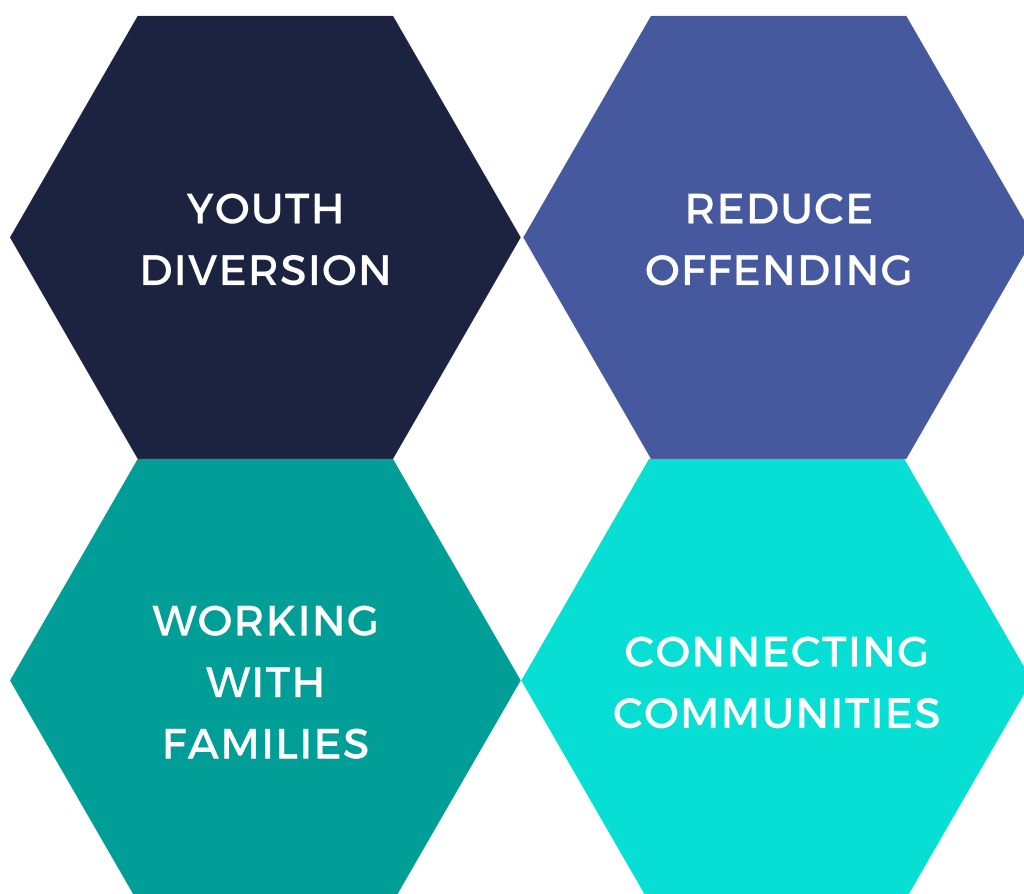
OUR VISION

CREATING A CULTURAL CHANGE ACROSS NORTHUMBRIA

The high level objectives of our strategy are:

- Reduce knife enabled serious violence
- Reduce hospital admissions for knife related serious violence
- Reduce homicides

However, in order to achieve this we need to develop and establish a local approach that provides us with the best opportunity to not only meet these objectives, but also create an environment that reduces the scale and impact of serious violence for generations to come. Therefore, our strategy will focus on four key themes to deliver our Public Health approach.



NORTHUMBRIA VRU

OUR PUBLIC HEALTH APPROACH

The public health approach to violence prevention seeks to improve the health and safety of all individuals by addressing underlying risk factors that increase the likelihood that an individual will become a victim or a perpetrator of violence.

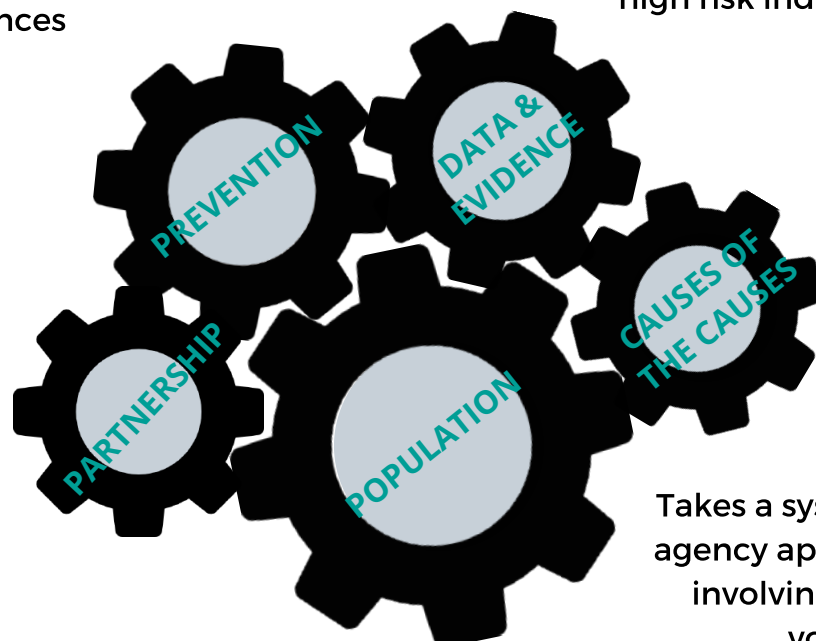
The approach consists of four steps:

1. Work out what is the problem, what effect does violence have on our Communities
2. Why does violence occur? What are the causes of violence and what factors increase or decrease the risk of violence occurring?
3. To find out what works to prevent violence by designing, implementing and evaluating interventions.
4. To implement effective interventions in a wide range of settings to tackle violence and the causes of violence and evaluate their impact

Is preventive: by tackling 'upstream' risk factors, it aims to lessen 'downstream' consequences

Takes a population approach, not one which just focuses on high risk individuals

Takes brave decisions that require a long term commitment, recognises the complexity of the issue, and seeks to build an evidence base that reflects the need



Takes a system wide multi-agency approach including involving business and volunteers

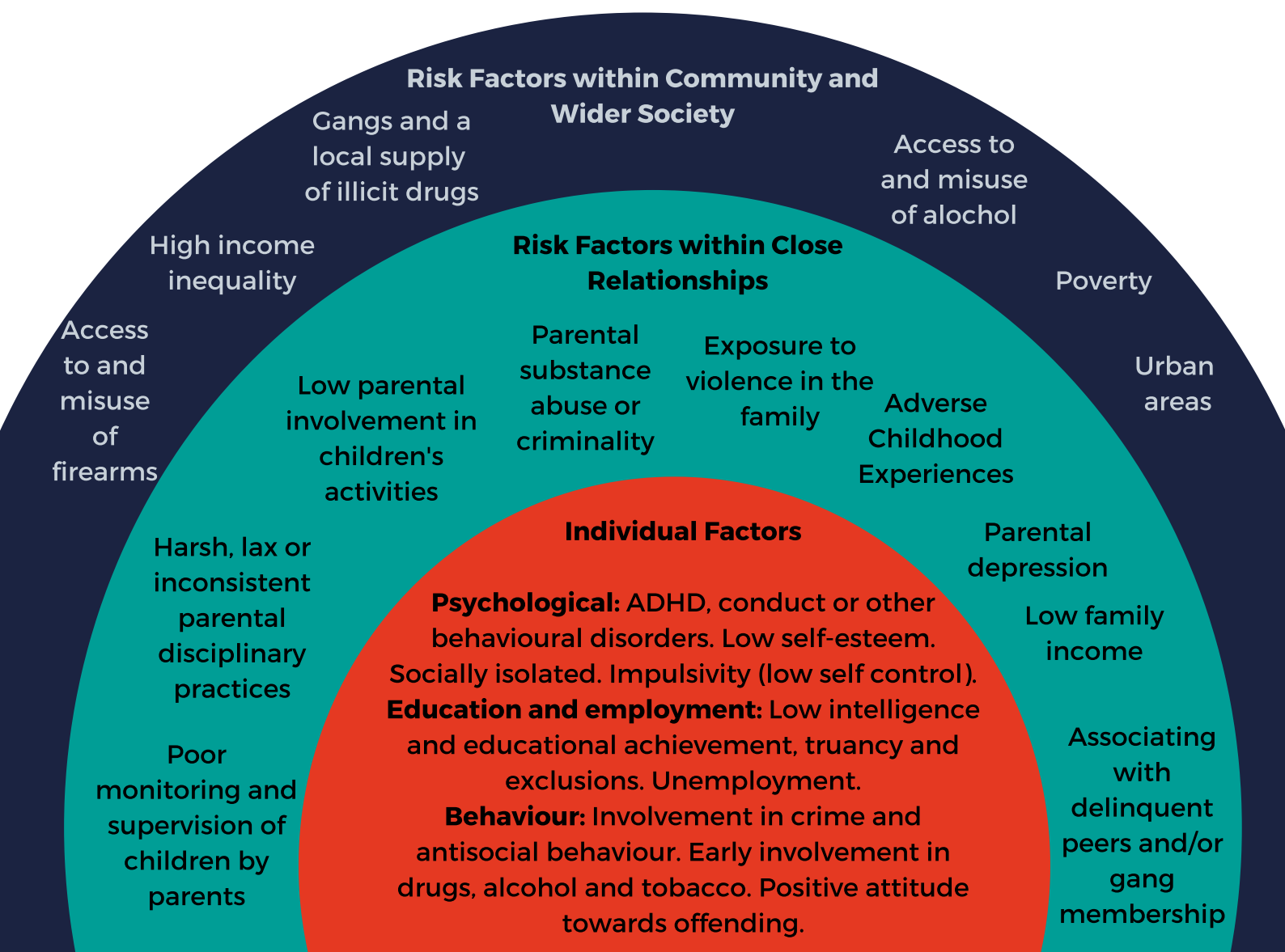
NORTHUMBRIA VRU

OUR PUBLIC HEALTH APPROACH

Defining violence

The World Health Organisation defines violence as:

The intentional use of physical force or power, threatened or actual, against oneself, another person, or against a group or community, that either results in or has a high likelihood of resulting in injury, death, psychological harm, maldevelopment or deprivation.



NORTHUMBRIA VRU

OUR WORK TO DATE

Northumbria VRU was established in September 2019



Our Strategic Board was then formed to provide strong leadership and direction



The insight report was developed to provide us with insight ahead of phase 2 and identified where we needed to focus our attentions



Through our VRU intervention fund, 32 local organisations were financially supported to reduce violence and provide opportunities for the most vulnerable



3 Local Authorities hosted Locality Reviews to build local insight and look into County Lines activity



A force wide strategic review took place, focusing on; County Lines, exploitation and vulnerability



Recruited anti-violence ambassadors from Youth Parliament to work closer with young people



Consultation and engagement began with Community & Voluntary Sector organisations



Continued to develop the VRU presence through media channels



Welcomed Knife Angel to Gateshead for a month of intervention work with over 1300 young people



NORTHUMBRIA VRU

OUR WORK TO DATE

Northumbria Police Surge Funding

In addition to funding for the Violence Reduction Unit received by the Police & Crime Commissioner, Northumbria Police received Police Surge Activity funding to tackle knife crime and serious violence.

The funding, used as part of the wider plan to tackle serious violence has enabled the force to:

FUND 1 COMMUNITY ENGAGEMENT VAN TO ENGAGE WITH HARDER TO REACH COMMUNITIES	EDUCATE 2,142 SCHOOL PUPILS THROUGH SCHOOL LIAISON OFFICERS	EQUIP THE FORCE WITH SERIOUS TRAUMA KITS
DELIVER KNIFE CRIME AWARENESS SESSIONS TO 13,471 INDIVIDUALS AT SAFETY WORKS	ALLOCATE 70 KNIFE WANDS ACROSS THE AREA COMMANDS AND OPERATIONS	INCREASE INVESTIGATIVE CAPACITY ACROSS EACH AREA COMMAND THROUGH 11 POLICE STAFF INVESTIGATORS
DEVELOP OUR INSIGHT AND UNDERSTANDING THROUGH A DEDICATED KNIFE CRIME ANALYTICAL TEAM	IMPROVE OUR TECHNOLOGY INVESTMENT TO SUPPORT RESPONSE OF SERIOUS VIOLENCE	DEVELOPMENT OF VIRTUAL REALITY KNIFE CRIME EDUCATIONAL PRODUCT
	REDUCE KNIFE ENABLED SERIOUS VIOLENCE FROM THE SAME PERIOD THE PREVIOUS YEAR (APRIL TO FEB)	INCREASE NUMBER OF TASER TRAINED OFFICERS
ENHANCE OUR FORENSIC SERVICES EQUIPMENT	INCREASE NUMBER OF ANPR EQUIPPED VEHICLES	PROVIDE SERIOUS TRAUMA KITS TO EVERY MARKED POLICE VEHICLE & 100 PERSONAL ISSUE KITS IN THREE HIGHEST KNIFE CRIME AREAS
DELIVER AN ADDITIONAL 20,095 HOURS OF OFFICER SUPPORT IN OPERATIONS AND ACTIVITIES		

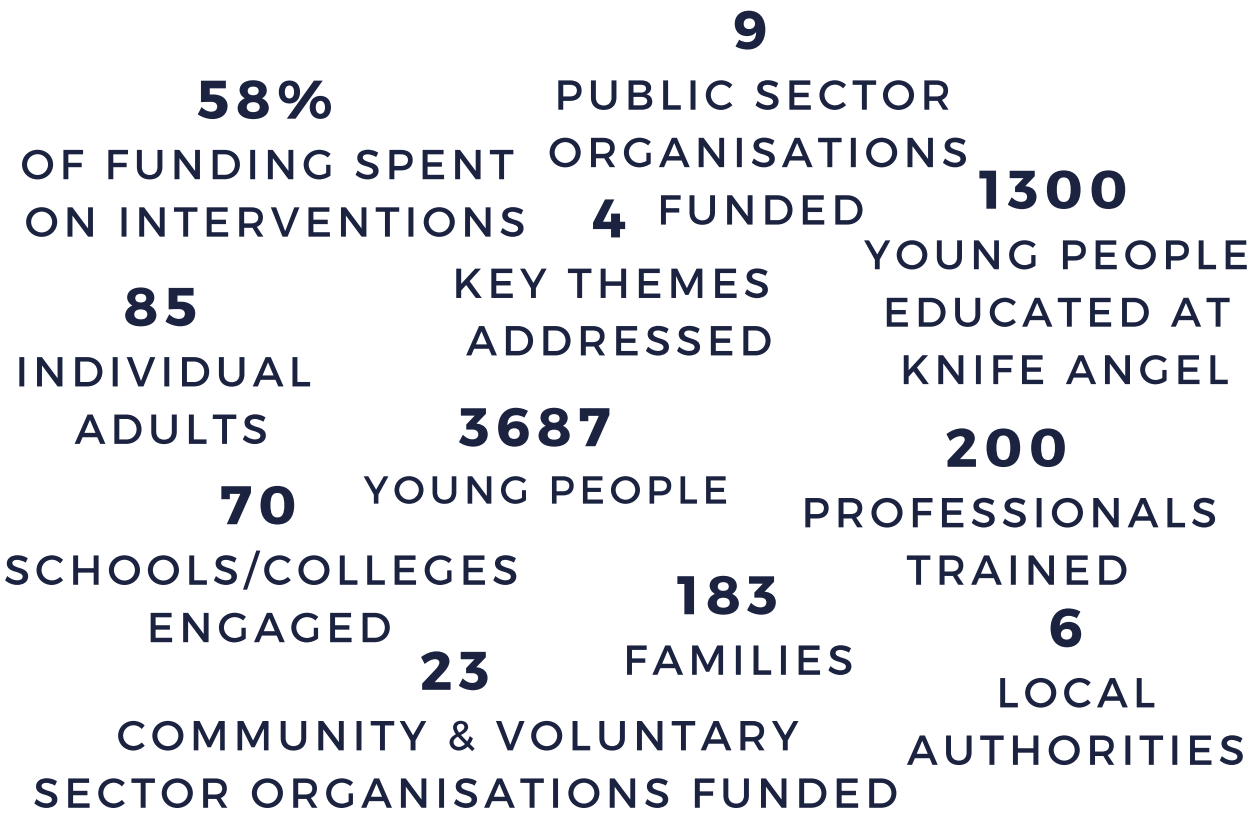
NORTHUMBRIA VRU

OUR INTERVENTIONS

"DANIEL HAD BEEN FOUND SLEEPING ROUGH BY OUR STAFF WHILE CONDUCTING A COUNT OF HOMELESS INDIVIDUALS. HE WAS INVITED TO ATTEND OUR HOMELESS DAY SERVICE THE FOLLOWING DAY. WHEN HE WAS THERE, HE WAS SUPPORTED TO FIND TEMPORARY ACCOMMODATION FOLLOWED BY MORE PERMANENT HOUSING A FEW WEEKS EARLIER. HE IS NOW ADDRESSING HIS MENTAL HEALTH ISSUES AND IS MORE CONFIDENT. THE ACTIVITIES DANIEL TOOK PART IN HELPED BUILD TRUST ENABLING HIM TO REACH OUT AND ACCEPT HELP. HE IS NOW MORE INDEPENDENT AND LESS RELIANT ON INDIVIDUALS THAT WERE NOT CONDUCIVE TO HIM BUILDING A SAFE AND FULFILLED LIFE."

INTERVENTION - OASIS COMMUNITY HOUSING

The Violence Reduction Unit supported 32 interventions that worked directly with people to reduce violence and the harm, whilst also educating people so they don't become involved in the lifestyle. Supporting these interventions has been critical in allowing us to deliver on our objective of 'improving lives to prevent crime'. This is just the beginning of our work and it has yielded some notable successes to date already - the future looks positive as we build on the initial success of phase 1.



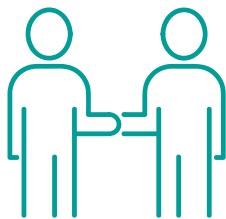
NORTHUMBRIA VRU

OUR INTERVENTIONS

"HE WAS ON A DOWNWARD SPIRAL AS FAR AS BEHAVIOUR WAS CONCERNED IN SCHOOL AND OUT IN THE COMMUNITY. HIS MOTHER EXPRESSED REAL CONCERN ABOUT HIS FRIENDSHIP GROUPS OUT OF SCHOOL AND HIS ATTITUDE TOWARDS HIS EDUCATION. HE WAS ON THE VERGE OF EXCLUSION AS THE SITUATION HAD BECOME SO BAD.

WORK STARTED WITH NUFC FOUNDATION AND THIS SEEMED TO HAVE A VERY POSITIVE IMPACT ON HIS BEHAVIOUR. HIS MOTHER SAID IT FELT THAT SHE HAD A DIFFERENT YOUNG PERSON LIVING WITH HER AS HIS ATTITUDE AND BEHAVIOUR HAD IMPROVED SO MUCH. I ADDED THAT HIS ATTITUDE TO LEARNING HAD IMPROVED IN LESSONS AND HE WAS STAYING BEHIND TO DO HIS HOMEWORK."

TEACHER, HEAD OF YEAR
INTERVENTION - NEWCASTLE UNITED FOUNDATION



- Improve development of social interaction skills
- Improved engagement/delivery with education
- Improved opportunities for personal development
- Improve multi-agency working/information sharing



NORTHUMBRIA VRU

OUR INTERVENTIONS

"THE SCARY THING WHEN ASKED, IS THAT I ENJOYED PRISON. HOWEVER, NOW, I WILL NEVER GO BACK. THANKS TO PAG I NOW HAVE A HOUSE AND CAN BE A GOOD MAM TO MY DAUGHTER IN A SAFE ENVIRONMENT. I CAN ACCESS A RANGE OF WORKSHOPS AND SESSIONS TO DEVELOP MY PERSONAL SKILLS AND START AGAIN. I HAVE THEM TO THANK FOR EVERYTHING."

INTERVENTION - PALLION ACTION GROUP



- Preventing offending
- Reducing re-offending
- Tackle/reduce school exclusions



NORTHUMBRIA VRU

OUR INTERVENTIONS

"I WAS OFFENDING FROM A YOUNG AGE, GETTING INVOLVED WITH POLICE FREQUENTLY AND EVENTUALLY GOT A CUSTODIAL SENTENCE IN DECEMBER 2015. ON LEAVING PRISON, I HAD NOTHING. I DIDN'T KNOW WHAT TO DO, WHERE TO GO, OR HOW TO SURVIVE. PROJECT NOVA WORKED WITH ME TO SECURE ACCOMMODATION AND THAT HAS CHANGED MY LIFE. I WAS PREVIOUSLY ON THE STREETS, DIDN'T HAVE ANY STABILITY AND IT WAS A MASSIVE RELIEF - I WAS CONCERNED FOR MY WELFARE AND WHERE MY LIFE WAS HEADING. GARY IS MY GUARDIAN ANGEL, WITHOUT GARY & PROJECT NOVA I BELIEVE I WOULD HAVE BEEN FOUND DEAD, THEY PULLED ME BACK FROM THE BRINK."

INTERVENTION - PROJECT NOVA



- Increase engagement with veterans
- Increase awareness of harm regarding drugs and alcohol
- Increase awareness of exploitation
- Increase engagement with drug and alcohol services
- Increase awareness of domestic abuse



NORTHUMBRIA VRU

OUR INTERVENTIONS

"WE ARE CURRENTLY WORKING WITH A YOUTH THAT HAS QUITE A PROLIFIC RECORD, BUT BY WORKING IN PARTNERSHIP WITH THE POLICE, YJS, SOCIAL WORKERS AND OTHERS, THEY ARE NOW NOT INVOLVED IN ANY TROUBLE AND HAVE A BRIGHT FUTURE AHEAD OF THEMSELVES. WE WERE JUST A VOICE FOR HIM. IT WAS BEING THAT VOICE AND BEING THERE TO SUPPORT AND GUIDE HIM AND WORKING WITH THE OTHER SERVICES INVOLVED TO BE ABLE TO GIVE HIM A BIT OF A BREAK. SUPPORTING HIM WITH REMINDERS AND ENSURING HE WAS ATTENDING APPOINTMENTS, APPROACHING HIM IN A DIFFERENT WAY AND USING THE EXISTING RELATIONSHIP WE BUILT WITH HIM TO GET THE BEST FOR ALL."

INTERVENTION - EDGE NORTH EAST



- Engage with more high-risk young people
- Engage more high-risk adults
- Empower communities
- Engage young people through sport



NORTHUMBRIA VRU

OUR CURRENT POSITION

“RESILIENCE RELATES TO THE ENVIRONMENT AROUND A CHILD - IT IS SOCIAL AND COMMUNITY BASED: IT IS NOT SOMETHING THAT IS IN THE CHILD OR INDIVIDUAL; IT IS HOW THE CHILD IS ABLE TO ELICIT HELP AND USE IT FROM AROUND THEM, BUT IT IS ALSO ABOUT THE SOCIAL AND PHYSICAL RESOURCES AROUND THE CHILD” -
PROF. EAMON MCCRORY, UNIVERSITY COLLEGE LONDON

Insight Report

The VRU has developed an Insight Report into serious violence and vulnerability across Northumbria. This report has been developed collaboratively with key local partners, using and layering data from police, fire & rescue, local authorities, CRC and probation, public health, NHS (A&E departments), and the voluntary sector. The insight report will provide the basis for the VRU and the partners to identify the key ‘harm hotspots’ across Northumbria, supporting the development and evaluation of interventions and support implementation.

The insight report has identified a link between the levels of serious violence and levels of deprivation. In general, violent offences in Northumbria are higher than the national average, and reflects a more deprived demographic population, further supporting the link between poverty and violent crime.

IN THE PERIOD APRIL TO SEPTEMBER 2019, 4,004 KNIVES WERE REMOVED BY OR SURRENDERED TO POLICE, AN INCREASE FROM 1,882 KNIVES FOR THE SAME PERIOD IN 2018.

IN THE 12 MONTHS TO 29TH FEBRUARY 2020 THERE HAS BEEN A 72% INCREASE IN THE NUMBER OF STOP AND SEARCHES FOR OFFENSIVE WEAPONS.

SOURCE: NORTHUMBRIA POLICE

NORTHUMBRIA VRU

OUR CURRENT POSITION

Facts & Figures

In the 12 months to September 2019 the Northumbria Police Force Area recorded **47,115** offences of violence against the person, including:

19,151 INCIDENTS OF
VIOLENCE WITHOUT
INJURY

10
HOMICIDES

13,296
INCIDENTS OF
VIOLENCE WITH
INJURY

1,153 POSSESSION
OF WEAPON
OFFENCES

4,668 SEXUAL
OFFENCES

14,653
INCIDENTS OF
STALKING AND
HARASSMENT

9,999 ADULTS ACROSS NORTHUMBRIA
RECEIVED TREATMENT FOR DRUGS AND
ALCOHOL MISUSE

A&E data from 1st April 2019 to 31st January 2020 (with projections to 31st March) show the following admissions:

97

FOR ASSAULT WITH A SHARP OBJECT - A
REDUCTION OF **37%** FROM THE PREVIOUS
YEAR

998

FOR VIOLENCE, EMERGENCY AND NON-
EMERGENCY - AN **11%** REDUCTION FROM
2018/2019

22

FOR ASSAULT WITH A SHARP OBJECT FOR
THOSE AGED 25 AND UNDER - A REDUCTION
OF **44%**

Half of all violent crime is alcohol-related and studies show that as alcohol consumption increases, so does violent offending.

Alcohol consumption and intoxication is also exploited by offenders committing sexual violence in Northumbria.

Across Northumbria there are estimated to be over 20,500 dependent drinkers, representing 16.94 per 1,000 population.

15,240 adults recorded as having a serious mental illness.

NORTHUMBRIA VRU

OUR CURRENT POSITION

Adverse Childhood Experiences

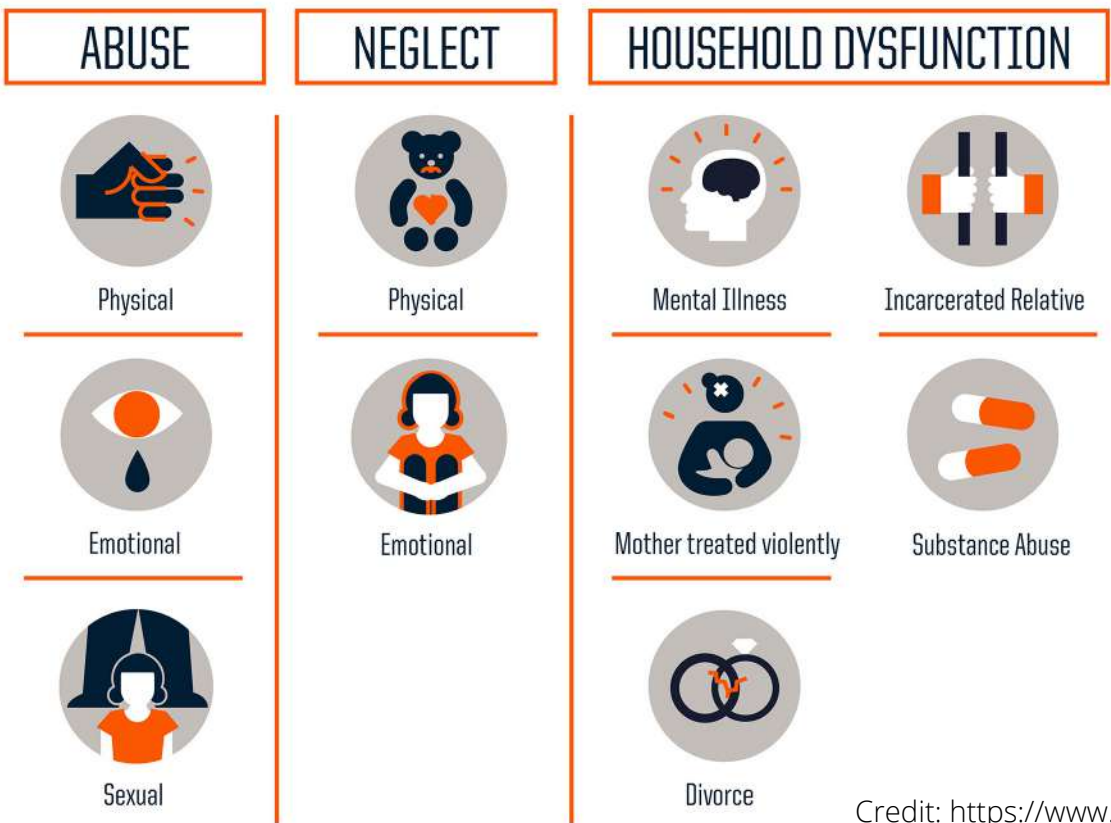
Northumbria have worse performance on factors associated with higher adverse childhood experiences than the national average, and would therefore be expected to have higher rates of ACEs.

All local authorities except North Tyneside would be expected to have a higher prevalence of people with 2 or more ACEs than the England average, and also a greater prevalence of people with 4 or more ACEs in Northumbria.

Impact of ACEs:

- 14 x more likely to have been a victim of violence in the past 12 months
- 15 x more likely to have committed violence against the person in the past 12 months

Adverse Childhood Experiences are closely linked with health harming behaviours / outcomes, including being a victim or perpetrator of violence. While the vast majority of people, even with multiple ACEs will not experience or perpetrate acts of violence in any particular year, people with multiple ACEs are significantly more likely to than people with no ACEs.



NORTHUMBRIA VRU

OUR PARTICIPANTS

"If I wasn't here I would be out on the streets making hell on, that's how I ended up getting referred in first place. Since coming here, I haven't had any problems at all, it's really helped. I enjoy having a place to go and something to do - I absolutely love it here. It's given me plans for the future."

Participant, Sunderland Community HUB

"I love working with the Foundation on the Premier League enterprise course, I really look forward to a Friday afternoon as my favourite time of the week. Ed is great, he is a really nice man, who gives time to talk and get to know all of the students. We get the chance to talk and discuss work with each other in class, which has helped my confidence in speaking out loud and working with other people. The course has inspired me to think about my future, I would love a career in football or engineering when I'm older. We have learnt about lots of amazing jobs connected to Football and I now know that I need to work really hard in lessons to get the best possible grades. This is one of the reasons I have managed to turn my behaviour round this year."

Participant, Newcastle United Foundation



NORTHUMBRIA VRU

OUR PARTICIPANTS

"i really enjoy talking with the workers, they help with any problem you have. It's not just one night of help, they've helped me with my CV, getting into work. They have supported me through my apprenticeship and now I've been offered a part-time role. I've developed a range of skills and been to places that I would have never got to experience otherwise."

Participant, St Pauls Community Partnership

"Support from IOM, and Mark in particular has changed my life. When you leave prison there are so many obstacles in the way, you need all the help and support you can get. Housing is crucial - without this, you can't get work, can't feel, or have any stability. I'm trying to set up a home for my kids, it's not fair on them to have to keep moving - they are the ones getting impacted and that's not right.

There has to be someone there to support people, show them what is possible and give them aspiration. People have to work hard though, they have to meet halfway. Family is a key driver – I would do anything for them.

If you get to the parents, then you get the kids as well. If I start committing crime again, my son will get dragged in, I don't want that. Help the parents first, and the kids will benefit."

Participant, Integrated Offender Management

"We previously had problems with him running away, constantly having to get the police involved - not listening, using drugs, hanging round with older kids and other issues. Since coming here, he's now in a routine - he's off the streets and really behaving to make sure that he can attend on a Monday & Friday. He's now doing really well at school and everyone has noticed the difference in him - this intervention has really changed him for the better. He trusts the staff, has the confidence to speak to them and knows now what he should and shouldn't be doing."

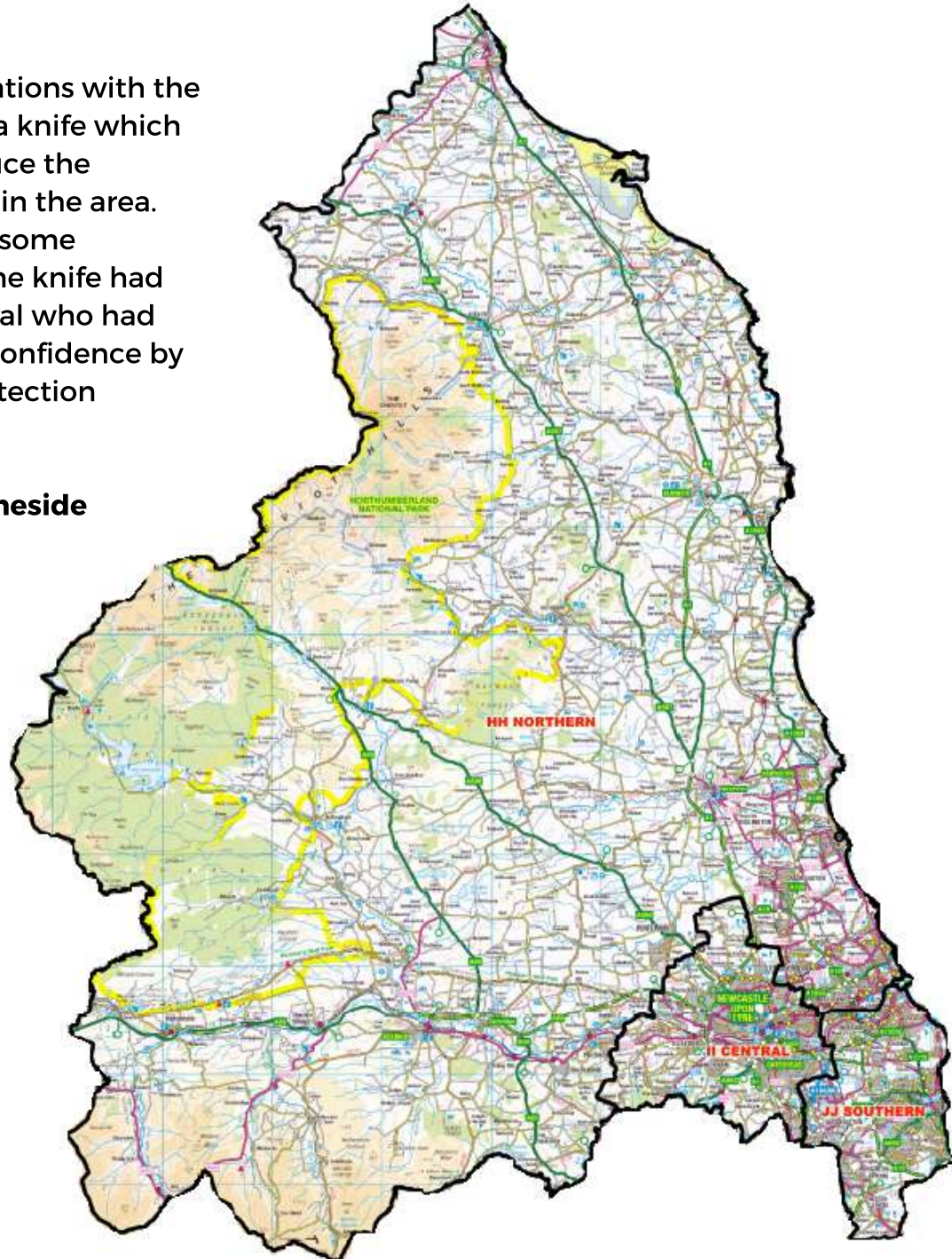
Mother of participant, Foundation of Light

NORTHUMBRIA VRU

OUR PARTICIPANTS

"Really interesting conversations with the young people about using a knife which have hopefully helped reduce the chances of a knife incident in the area. They also provided us with some intelligence about where the knife had come from and an individual who had been involved all taken in confidence by police and Community Protection Officer."

Project Manager, North Tyneside Council



"Participant A's mental health has significantly improved since engaging at Larkspur House, she volunteers multiple times a week with the children's groups and facilitated a 'Crafternoon' for MIND which was a great success. She has repeatedly thanked staff for providing opportunity for her and her family, "Thank you for letting me be a part of it and giving me a sense of purpose... it's been really nice being [here]".

Project Manager, Edberts House

NORTHUMBRIA VRU

OUR RESPONSE

In Northumbria we want to improve lives to prevent crime. By using a public health approach, we are able to better understand the causes of violent crime and work more effectively to stop it escalating. The Violence Reduction Unit will achieve that aim by working with others to stop violence before it starts, halt its progression and provide ways out for people already trapped in violent behaviour.

We will ensure frontline staff, training and resources are in place to help prevent violence and support those seeking to improve their lives. We are seeking to strengthen communities to resist violent crime, using local intelligence to interrupt the transmission of violence by analysing where it may occur and intervening with those at higher risk.

To fully adopt a public health approach, we need to change the way we use our existing resources to tackle the problem. Our approach places a greater emphasis on working with communities and making the most of the skills and expertise that exists within our neighbourhoods and services.

We want to:

- Provide opportunities for young people to access activities and services that enrich their daily lives, provide new experiences and promote the importance of positive role models.
- Reduce the risk of individuals being drawn into violence and other vulnerabilities and make it harder for others to take advantage.
- Ensure that communities are better informed of the risks and know where they can get help.
- Better understand and prevent offending behaviour to both reduce the risk of victimisation and the impact on families.
- Make the most of the skills and expertise across Northumbria, making sure we have strong partnerships in place that work together to deliver the public health approach.

This will take time and commitment from everyone and that is why we have set out our initial five-year strategy with some clear milestones to ensure our public health approach is realised.

NORTHUMBRIA VRU

OUR RESPONSE

Year 1:

- Establish the VRU
- Understand the problem
- Local Interventions
- Promoting the Public Health approach

Year 2:

- Refine our approach
- Apply the key themes
- Strengthen partnerships
- Connecting communities
- Mapping the Early Help approach
- Becoming adversity aware

Year 3:

- Expanding our community hubs
- Implement the Violence Reduction Quality mark
- Effective use of partnership intelligence
- Community response to adversity
- Working with businesses to reduce violence

Year 4:

- A joined-up approach to addressing all vulnerability
- Established teams in 'harm spot' areas
- Sustaining community hubs
- Peer support within communities and schools

Year 5:

- Established joint delivery model across Northumbria to tackle violence
- An increase in the take up of early help services
- Reduction in violence

NORTHUMBRIA VRU

OUR RESPONSE

The insight report and our work in year one has provided a strong foundation to move swiftly into year two where we can build on what we know is working and develop new approaches.

We should also be mindful of the national context in relation to this agenda and the impending Serious Violence Legal Duty. The new duty will place a statutory requirement on partners to share data and knowledge and work together to tackle serious violence. In Northumbria, we already have great working relationships with our partners, this new duty will only enhance this work and deliver our vision.

OUR RESPONSE
IS
DETAILED
UNDER FOUR
THEMES:

YOUTH
DIVERSION

REDUCE
OFFENDING

WORKING
WITH
FAMILIES

CONNECTING
COMMUNITIES

YOUTH DIVERSION

EFFECTIVE DIVERSION OF YOUNG PEOPLE:

PROVIDING OPPORTUNITIES FOR YOUNG PEOPLE INVOLVED IN SERIOUS VIOLENCE AND VULNERABLE TO EXPLOITATION TO SEEK SUPPORT, ENGAGING IN ACTIVITIES THAT ADDRESS RISK TAKING BEHAVIOUR AND REDUCE VULNERABILITY.

Effective youth diversion can reduce crime, cut costs, and create better outcomes for young people. There is a strong evidence base suggesting that early involvement in the criminal justice system significantly increases the likelihood of young people reoffending.

Effective youth diversion generates a range of positive outcomes when compared to formal criminal justice processes. Exposure to positive, constructive and place-based interventions and activities can raise aspirations, open up new opportunities and increase exposure to positive influences.

Diversion provides young people with the chance to engage in positive activities, stimulate peer support and build stronger community links.



YOUTH DIVERSION

EFFECTIVE DIVERSION OF YOUNG PEOPLE:

PROVIDING OPPORTUNITIES FOR YOUNG PEOPLE INVOLVED IN SERIOUS VIOLENCE AND VULNERABLE TO EXPLOITATION TO SEEK SUPPORT, ENGAGING IN ACTIVITIES THAT ADDRESS RISK TAKING BEHAVIOUR AND REDUCE VULNERABILITY.

WHAT WE WILL DO:

We will provide a targeted youth diversion programme aimed at our young people who are at risk of being drawn into knife crime, serious violence and other forms of vulnerability. This will be delivered through the 'You Only Live Once' (YOLO) programme.

YOLO Programme

- Programme being delivered by the Newcastle United Foundation and Foundation of Light, across Northumbria
- Prevents young people from becoming involved in knife crime and other forms of serious violence such as weapon carrying and risk-taking behaviour
- 1:1 mentoring with young people
- Tailor made programmes of activity and intervention agreed based on the needs and interests of young people

Benefits:

Continuation and expansion of YOLO provides us with the opportunity to deliver tailor made diversionary activities to our most vulnerable young people. This provides us with the opportunity to further develop an approach to effective practice with young people, providing an evidence base of what works which can be shared with others.

Measures of success:

- Reduction in young people being exposed to serious violence.
- Reduction in reported ASB in the areas where interventions are taking place.
- Number of young people engaged in the project.

"A GROWING BODY OF EVIDENCE SUGGESTS THAT DIVERTING CHILDREN FROM FORMAL CRIMINAL JUSTICE PROCESSES IS 'A PROTECTIVE FACTOR AGAINST SERIOUS AND PROLONGED OFFENDING,' THEREFORE DIVERSION SHOULD HAVE A LONG-TERM IMPACT ON YOUTH CRIME LEVELS."
HOUSE OF COMMONS JUSTICE COMMITTEE

YOUTH DIVERSION

MEANINGFUL ENGAGEMENT WITH SCHOOLS:

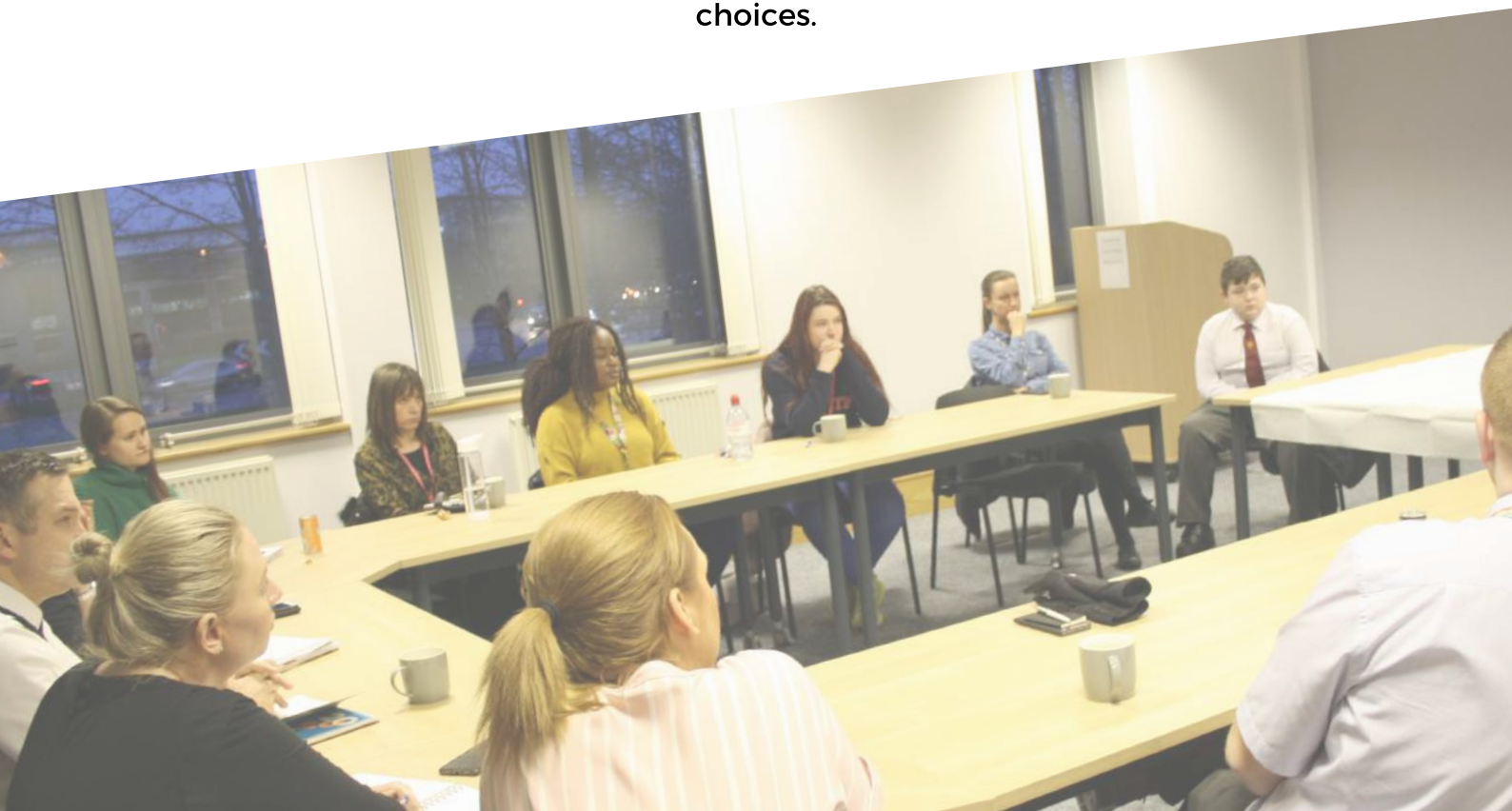
THE DEVELOPMENT AND CO-DELIVERY OF INTERVENTIONS WITHIN SCHOOLS TO RAISE AWARENESS AND REDUCE THE RISK OF SERIOUS VIOLENCE AT THE EARLIEST OPPORTUNITY.

Schools have a key role to play in reducing serious violence. There is a need to ensure that we work in partnership to support the pastoral role provided to young people.

Engagement with schools helps to strengthen partnerships, enhances the wider community offer and helps raise awareness of serious violence and vulnerability.

The new PSHE requirements will become mandatory from September 2020 and include topics such as behaviour, risk taking, online safety and relationships for both primary and secondary schools.

In addition, the Serious Violence Legal Duty sets out the expectation for schools that they will engage with other partners, share information and have a duty to support a reduction in violence amongst their pupils/communities. Alongside new guidance released for teachers to support “Safeguarding children from sexual violence, child sexual exploitation and harmful practices”, this highlights the importance for schools to find suitable solutions to engage their young people in making better choices.



YOUTH DIVERSION

MEANINGFUL ENGAGEMENT WITH SCHOOLS:

THE DEVELOPMENT AND CO-DELIVERY OF INTERVENTIONS WITHIN SCHOOLS TO RAISE AWARENESS AND REDUCE THE RISK OF SERIOUS VIOLENCE AT THE EARLIEST OPPORTUNITY.

WHAT WE WILL DO:

We will develop a range of interactive resources to be delivered in schools by a dedicated team of liaison officers. Utilising the findings from the insight report we will prioritise intervention at our 'harm spot' locations.

School Liaison Officers

- Dedicated school liaison officers working in primary and senior schools
- Deliver bespoke, tailor made education programmes
- Allows targeted use of experts to deliver in key areas, based on local intelligence, while other schools are offered the materials to deliver internally
- Extensive knowledge of key subjects such as domestic abuse and knife crime

Benefits:

The development of a dedicated resource to work in schools gives us the platform to build on the positive relationships and contacts already established as well as engage directly with young people on the key issues surrounding serious violence and vulnerability. Through the creation of an accredited resource we are also building in some legacy cover that can be picked up by teachers and used as part of their ongoing PSHE work. This project also links into our commitment to intervention at the earliest stage and should lead to an increase in access to early interventions and referrals to safeguarding/support.

Measures of success:

- Number of schools engaged over 12 months.
- Number of children and young people involved in the sessions.
- Number of disclosures/referrals for additional support.

REDUCE OFFENDING

MULTI-AGENCY APPROACHES AIMED AT REDUCING OFFENDING OF OUR MOST VULNERABLE INDIVIDUALS.

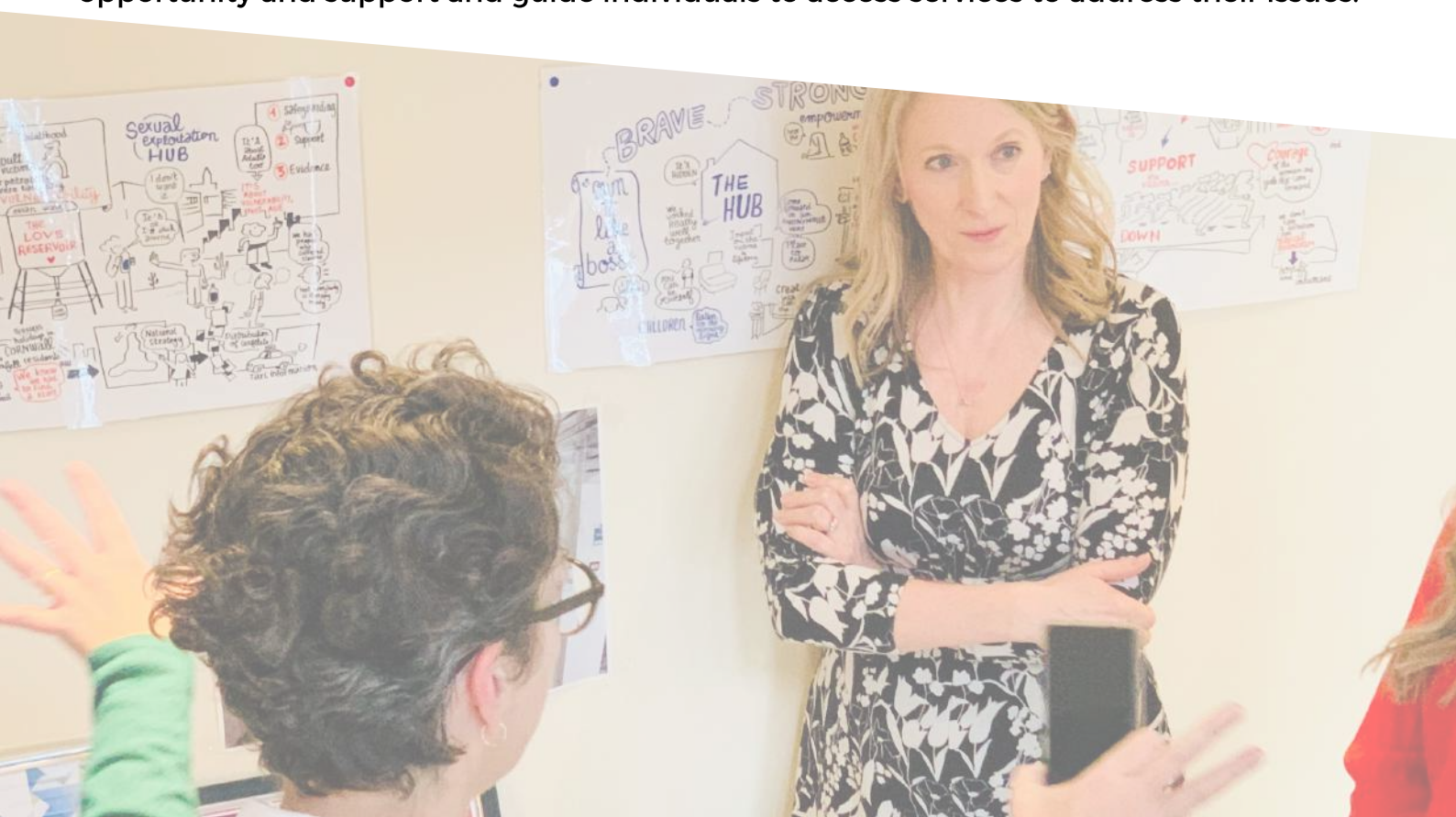
True, integrated problem-solving work offers a real chance to identify root causes of violence and not just treat the symptom. All partners have a role to play in helping to tackle these root causes. In order to effectively do this we need to adopt a problem solving approach.

Effective multi-agency approaches provide us with the opportunity to maximise the local resource and expertise available to meet the needs of our most vulnerable.

Multi-agency models which work with local communities to meet local needs and promote early intervention and support are proven to be successful. They reduce impact on frontline services, promote the importance of community engagement and lead to a reduction in crime and overall feelings of safety.

WHAT WILL WE DO:

We will develop problem solving approaches targeted at our most prolific/at risk individuals to reduce reoffending and harm and increase the likelihood of successful engagement with services and interventions. We will seek to engage at the earliest opportunity and support and guide individuals to access services to address their issues.



REDUCE OFFENDING

MULTI-AGENCY APPROACHES AIMED AT REDUCING OFFENDING OF OUR MOST VULNERABLE INDIVIDUALS.

Working together to reduce reoffending

- Work to put measures in place that reduce chances of other family members being drawn into criminal activity
- Will prioritise the focus around the employment and training needs of some of our most prolific offenders
- Through support increase the likelihood of individuals securing and sustaining longer term employment and training opportunities
- Provide a holistic support service to individuals and their immediate families
- Work to improve access to early help services across the 6 local authority areas

Benefits:

Access to employment and training is widely recognised as a significant factor in relation to offending and successful rehabilitation. By providing additional support to address the need we are increasing the likelihood of individuals maintaining engagement with support services and reducing offending behaviour.

Measures of success:

- Reduction in offending by cohort.
- Reduction in serious violence offences forcewide.
- Number of individuals accessing employment/volunteering

Link Workers

- Working with partners we will locate Community Link Workers within Gateshead, North Tyneside and Northumberland.
- The Link Workers will support young people at risk of, or involved in violence, to help them change their lives by establishing pathways to access services and interventions.

Benefits:

This approach provides us with the opportunity to further build links with local statutory and community and voluntary partners and increase opportunities to identify victims and vulnerable individuals at the earliest opportunity. It also provides the opportunity to build capacity among front line professionals to improve identification of vulnerable individuals and families, increasing the opportunity for signposting to additional support.

Measures of success:

- Number of individuals accessing Link Workers.
- Reduction in repeat presentations to services.
- Increase in engagement with support services.

REDUCE OFFENDING

MULTI-AGENCY APPROACHES AIMED AT REDUCING OFFENDING OF OUR MOST VULNERABLE INDIVIDUALS.

Out of Court Disposals

- Target low level adult offenders
- Reduce their risk of being drawn into more serious offending
- Increases opportunities to address offending behaviour diverting individuals to other avenues of support and reducing the risk of re-offending and escalation to more serious offences
- Three pilots:
 - Restorative justice and community resolution pilot
 - Conditional Caution Pathway – V-Awareness Programme
 - Diversion of offenders from Charge into a Conditional Caution

Benefits:

The development of this approach increases opportunities to address offending behaviour diverting individuals to other avenues of support and reducing the risk of re-offending and escalation to more serious offences. A particular focus on female offenders also increases the level of support on offer as well as assists with the development of referral pathways to deal with a particularly vulnerable group who are at increased risk of reoffending.

Measures of success:

- Number of restorative justice/community resolution interventions
- Increased referrals and compliance with V-awareness Programme
- Increased use of Conditional Cautions for both male and females
- Number of referrals of cohort to support services
- Reduction in repeat offending

WORKING WITH FAMILIES

INCREASED PATHWAYS FOR FAMILIES AND INDIVIDUALS TO ACCESS SUPPORT AND OPPORTUNITIES AT THE EARLIEST OPPORTUNITY, REDUCING THE RISK OF BEING A VICTIM AND/OR PERPETRATOR OF SERIOUS VIOLENCE.

Key to tackling the root causes of violence is the adoption of a multi-disciplinary place-based approach within our communities to address vulnerability at the earliest stage. This approach will take time and requires commitment from partners both in terms of dedicated resource and where necessary revised working practices. Community engagement and involvement in this approach is vital. Through our approach we are looking to develop three distinct pilots North, Central and South of the Northumbria area. This will provide us with the opportunity to build a community model with communities and key partners as well as develop and share best practice to support the expansion of this approach to other areas.

WHAT WE WILL DO:

Working in three localities we will pilot an evidenced based multi-agency model working with local communities to meet local needs and promote early intervention and support. This will seek to reduce the impact on frontline services, promote the importance of community engagement and lead to a reduction in crime and an increase in overall feelings of safety.



WORKING WITH FAMILIES

INCREASED PATHWAYS FOR FAMILIES AND INDIVIDUALS TO ACCESS SUPPORT AND OPPORTUNITIES AT THE EARLIEST OPPORTUNITY, REDUCING THE RISK OF BEING A VICTIM AND/OR PERPETRATOR OF SERIOUS VIOLENCE.

Thrive in Beacon Lough East

- Development of a model of early year intervention and engagement
- Working with families where there is identified 'risk factors' which are likely to influence the development of a new born baby and therefore the potential for success in that child's life
- Proactive targeting of resources and services to those who need it most adopting a family approach

Benefits:

Early intervention can be proactive in addressing under age alcohol and drug use issues. It can also address domestic abuse, gang related violence, county lines and childhood challenging violent or aggressive behaviour

Measure of success:

- Reduction in crime and ASB within pilot areas.
- Increase in the number of referrals for Early Help support.
- Reduction in the number of frontline safeguarding referrals.

Southwick Hub

- Development of a local community hub in a high harm area
- A Community development worker will act as the link between communities and a range of other local authority and voluntary sector providers
- Coordination of community activities to build relations in the community and between communities and partners

Benefits:

A Community Development worker will bring people together helping the community bring about social change and improve the quality of life in their local area. They will work with individuals, families or whole communities, empowering them to identify their assets, needs, opportunities, rights and responsibilities and plan what they want to achieve and take appropriate action.

Measure of success:

- Reduction in crime and ASB within pilot areas.
- Increase in the number of referrals for Early Help support.
- Reduction in the number of frontline safeguarding referrals.

WORKING WITH FAMILIES

INCREASED PATHWAYS FOR FAMILIES AND INDIVIDUALS TO ACCESS SUPPORT AND OPPORTUNITIES AT THE EARLIEST OPPORTUNITY, REDUCING THE RISK OF BEING A VICTIM AND/OR PERPETRATOR OF SERIOUS VIOLENCE.

Family Gateway

- Empowering families to become resilient and move forward in their lives, building safe and stable home and community environments and breaking generational cycles of unemployment, poverty and isolation.
- Family Gateway want to address social injustice and reduce gaps in attainment and opportunity for young people and children in disadvantaged communities.

Benefits:

Family Gateway will work with families in North Tyneside who live in poverty, have complex needs and who may have been identified as being in need by statutory services such as social services or the police but are not accessing services and have barriers to working with professionals due to fear (e.g. of children being taken into care), stigma or lack of knowledge.

Measures of success:

- Reduction in crime and ASB within pilot areas.
- Increase in the number of referrals for Early Help support.
- Reduction in the number of frontline safeguarding referrals.

"WE MUST PREVENT PEOPLE FROM COMMITTING SERIOUS VIOLENCE BY DEVELOPING RESILIENCE AND SUPPORTING POSITIVE ALTERNATIVES AND TIMELY INTERVENTIONS. PREVENTION AND EARLY INTERVENTION ARE AT THE HEART OF OUR APPROACH TO TACKLING SERIOUS VIOLENCE"

CONNECTING COMMUNITIES

STRENGTHENING PARTNERSHIPS TO REDUCE SERIOUS VIOLENCE:
BUILDING THE CAPACITY OF PARTNERS AND MAKING THE MOST OF EXISTING
NETWORKS TO ENHANCE THE VISION OF THE VIOLENCE REDUCTION
UNIT.

It is clear that reducing violence cannot be achieved by one organisation working alone. To successfully tackle violence, it requires all of us to work collaboratively to address the cause and effect of violence. There is a need to ensure that there is a co-ordinated approach to tackling violence across the six local authority areas and that we are utilising existing partnership structures to align our priorities.

WHAT WE WILL DO:

Working with our colleagues across the six local authority areas we will ensure that the public health approach is being implemented across the key partnerships. We will also work with our partners to better understand the work being done within each area in relation to 'advertising aware' approaches and 'Adverse Childhood Experiences'.



CONNECTING COMMUNITIES

STRENGTHENING PARTNERSHIPS TO REDUCE SERIOUS VIOLENCE:
BUILDING THE CAPACITY OF PARTNERS AND MAKING THE MOST OF EXISTING
NETWORKS TO ENHANCE THE VISION OF THE VIOLENCE REDUCTION
UNIT.

Greater understanding of the 'adversity aware' approach

- Mapping of the existing approaches within the six local authority areas
- Sharing of best practice and the identification of gaps
- Working with the Voluntary and Community Sector to increase exposure of adversity aware practice

Benefits:

Continued development and implementation of adversity aware approaches across Northumbria will further support the public health approach to tackling violence and promote the importance of intervention at the earliest stage

Measure of success:

- Development of an accredited training package.
- Number of sessions delivered across the force area.
- Increase in the number of early help referrals.

Community Safety Partnerships

- Utilise existing partnerships to ensure the work of the VRU is coordinated across Northumbria and achieving maximum coverage
- Development of a Violence Reduction Readiness self-assessment
- Agree and implement a violence reduction intervention process within each CSP area linked to the findings of the insight report

Benefits:

The co-ordination and strengthening of partnerships across the six local authority areas will ensure that priorities are aligned and increase opportunities to target shared resources at areas of most need.

Measure of success:

- Reduction in violence within intervention areas.
- Reduction in ASB.
- Increased number of referrals to support services.

CONNECTING COMMUNITIES

WORKING CLOSELY WITH AND INVOLVING OUR COMMUNITIES ACROSS NORTHUMBRIA

In order to instigate lasting change across Northumbria we need to work closely with our communities. Northumbria is made up of six very distinct local authority areas. In order to implement an effective response to serious violence we need to work with local communities and develop and deliver a shared approach. To achieve this, we will:

- **Inform** communities about the work of the VRU and our approach to tackling serious violence
- **Involve** communities in our approach and work with them to tailor our interventions
- **Invest** in our communities to build their capacity to tackle the root cause of violence and vulnerability
- **Inspire** communities to act as ambassadors, championing our approach, providing constructive challenge, becoming more 'adversity aware'.

Recognising the importance of community hubs:

A community hub is a local resource that exists within a defined neighbourhood, often run by local residents, community volunteers and the wider voluntary and community sector.

To many, community hubs are invaluable, providing a range of services and informal support such as:

- Activities, clubs and play groups for children and young people
- Sporting activities
- Advice and access to services such as Citizens Advice, DWP, Housing support
- Craft and hobby clubs
- Access to I.T. facilities and local services
- Breakfast and cookery clubs
- Informal peer support



CONNECTING COMMUNITIES

WORKING CLOSELY WITH AND INVOLVING OUR COMMUNITIES ACROSS NORTHUMBRIA

Hubs exist within the heart of communities and are often the 'eyes and ears' of the local area. Across Northumbria there are a diverse range of community hubs providing much needed support and engaging with local residents on a daily basis.

We are committed to engaging effectively with our communities to tackle the root causes of violence and utilising the findings of the insight report providing additional support to those areas that need it most. As part of our approach over the next twelve months we will:

- Map the existing community hubs across the six local authority areas
- Develop an engagement process that ensures that we maintain meaningful contact with communities on our approach to serious violence
- Promote best practice with our partners and facilitate the joint working of community hubs to build on positive practice

Young people

Effective youth engagement is key to our approach if we are to intervene at the earliest stage. Engagement needs to be fit for purpose and a continual process that seeks to build capacity as well as provide reassurance. To assist us with our engagement approach we are working with nine 'Violence Reduction Youth Ambassadors' across the six local authority areas. To support this work, we are also developing a resource with young people to continue engagement on our approach and seek their views on the areas we should be prioritising. Over the next twelve months we will:

- Refine our youth engagement process and identify key youth partners across the 6 local authority areas
- Develop the role and remit of the 'Violence Reduction Youth Ambassadors' to work within schools and community settings to inform and engage with their peers on the serious violence agenda
- Work with young people to develop a range of resources to promote and enhance our engagement process

*"WE ARE WORKING WITH PEOPLE FROM ACROSS OUR REGION,
TAKING A PUBLIC HEALTH APPROACH AND STOPPING THIS
PROBLEM IN ITS TRACKS"*
KIM MCGUINNESS

NORTHUMBRIA VRU

OUR MEASURES OF SUCCESS

We are very early in our journey but have already made great progress in delivering our vision.

Going forward we will measure our changes, it's important that we do that, we can see where we're making a difference and the subsequent impact. In addition to this, it's equally important that we look for and report on the individual success stories that really show the impact.

Youth Diversion:

- Reduction in reported ASB in areas where interventions are delivered.
- Number of young people engaged in the project.
- Number of schools engaged over 12 months.
- Number of children and young people involved in the sessions.
- Number of disclosures/referrals for additional support.

Reduce Offending:

- Reduction in repeat offending.
- Reduction in serious violence offences forcewide.
- Number of individuals accessing employment/housing.
- Number of individuals accessing link workers.
- Reduction in repeat presentations to services.

Working with families:

- Reduction in crime and ASB within pilot areas.
- Increase in the number of referrals for Early Help support.
- Reduction in the number of frontline safeguarding referrals.

Connecting communities:

- Reduction in violence within intervention areas.
- Reduction in ASB.
- Increase in the number of early help referrals

NORTHUMBRIA VRU

OUR NEXT STEPS

This document outlines the first stages of our five-year plan allowing us to build the foundations for our long-term approach. We will produce an overview of progress by the end of March 2021 and provide more details of future years. In summary our work in years 3 to 5 will focus on:

YEAR 3

Expanding our community hubs: Our work in year two is only the start. We want to find out what works well within communities and we want to share this with others. The public health approach is all about finding new ways to work and using the resources we have in a different way. We want to improve the relationship between families and services and do more with communities. This will be a key element of our approach in year 3 as we look to provide opportunities to access support at the earliest opportunity.

Implement the Violence Reduction Quality mark: We have made a commitment to improving the quality of responses to violence across Northumbria. To do this we need to be clear on what good quality looks like. From our learning in years 1 and 2 and through our work with communities and services we will look to establish a minimum standard which needs to be applied to violence reduction responses.

Effective use of partnership intelligence: As we continue to better understand the problem, we need to establish a system that allows all partners to effectively share and use data and intelligence to better design and target their services to reduce violence.

Community response to adversity: As services become more aware of the impact of adversity and adverse childhood experiences, so do communities. We will focus on working with communities to better identify the signs and symptoms as well as build resilience to deal with the impact. This will support our continuous work to increase early intervention.

Working with businesses to reduce violence: As we continue to promote pathways to employment and training for offenders and vulnerable individuals, we want to further develop relationships with businesses, share our vision and involve them in the response. This will include becoming more adversity aware, increasing opportunities for volunteering/work placements and looking at ways they can play more of a role within our local communities

NORTHUMBRIA VRU

OUR NEXT STEPS

YEAR 4

A joined-up approach to addressing all vulnerability: The root causes of violence can apply to all areas of vulnerability and we cannot look at violence in isolation. As we refine our partnership approach, we will look to ensure that we are addressing all aspects of vulnerability as well as explore how the work of the VRU could expand and add value to wider issues within communities.

Established teams in 'harm spot' areas: By year 4 we will have clear evidence of what works, and we will have clear commitment from partners. Using our collective data and intelligence, partners will be able to commit resources within our areas of most need to address issues and reduce violence and other forms of vulnerability.

Sustaining community hubs: The commitment to community hubs will continue and we will work with communities to explore how they can be sustained. We will explore opportunities to develop 'centres of excellence' within our communities, looking at ways to share best practice, develop expertise and commission local communities to deliver some services.

Peer support within communities and schools: In order to sustain our approach, we need to build capacity within communities and schools. We will look to expand the role of community and youth peer support, highlighting the importance of informal networks and support.

NORTHUMBRIA VRU

OUR NEXT STEPS

YEAR 5

Established joint delivery model across Northumbria to tackle violence: By year 5 our public health approach will be well established, and we will have an effective delivery model across Northumbria with buy in from all key partners. This model will operate at a neighbourhood level targeting resources at communities who need it most. As we move towards the next stages of our public health approach it will be crucial to sustain this model for future years as well as refine it to meet the emerging needs of our communities

An increase in the take up of early help services: Through working more with communities and promoting access to services at the earliest opportunity. We will be able to see an increase in families accessing services and opportunities within their communities at the earliest point. By bringing services closer to communities and promoting the importance of community and peer support this should lead to a reduction in demand for frontline services, allowing organisations to invest more in community-based services.

Reduction in violence: At this point we will have better informed communities and partnerships and we will have a clear process in place for how we tackle violence in Northumbria. Our vision is that all the work to this point will lead to a meaningful reduction in violence and we will need to ensure that we have the processes in place for this to continue beyond year 5.

NORTHUMBRIA VRU

OUR CHANNELS

TO FOLLOW THE WORK OF
THE NORTHUMBRIA VRU,
VISIT:



@NORTHUMBRIAPCC



@NORTHUMBRIAVRU



@PCC_KIM_MCGUINNESS



NORTHUMBRIA-PCC.GOV.UK